

www.landscapearchitect.com

LANDSCAPE ARCHITECT

AND SPECIFIER NEWS

THE INDUSTRY TRADE MAGAZINE FOR COMMERCIAL LANDSCAPE SPECIFIERS NATIONWIDE!

SCHOOL & CAMPUS DESIGN

ON THE COVER:

Education in Design, p 70

Redesigned Campus Brings Students
Closer to the Landscape, p 62

Boarded in History, p 48

PLUS

**SUSTAINABLE PRESCHOOL AND
NATURE CENTER, P 28**

**BRING THE CLASSROOM OUTSIDE
IN WASHINGTON STATE, P 38**



Education in Design

by Coleman & Associates

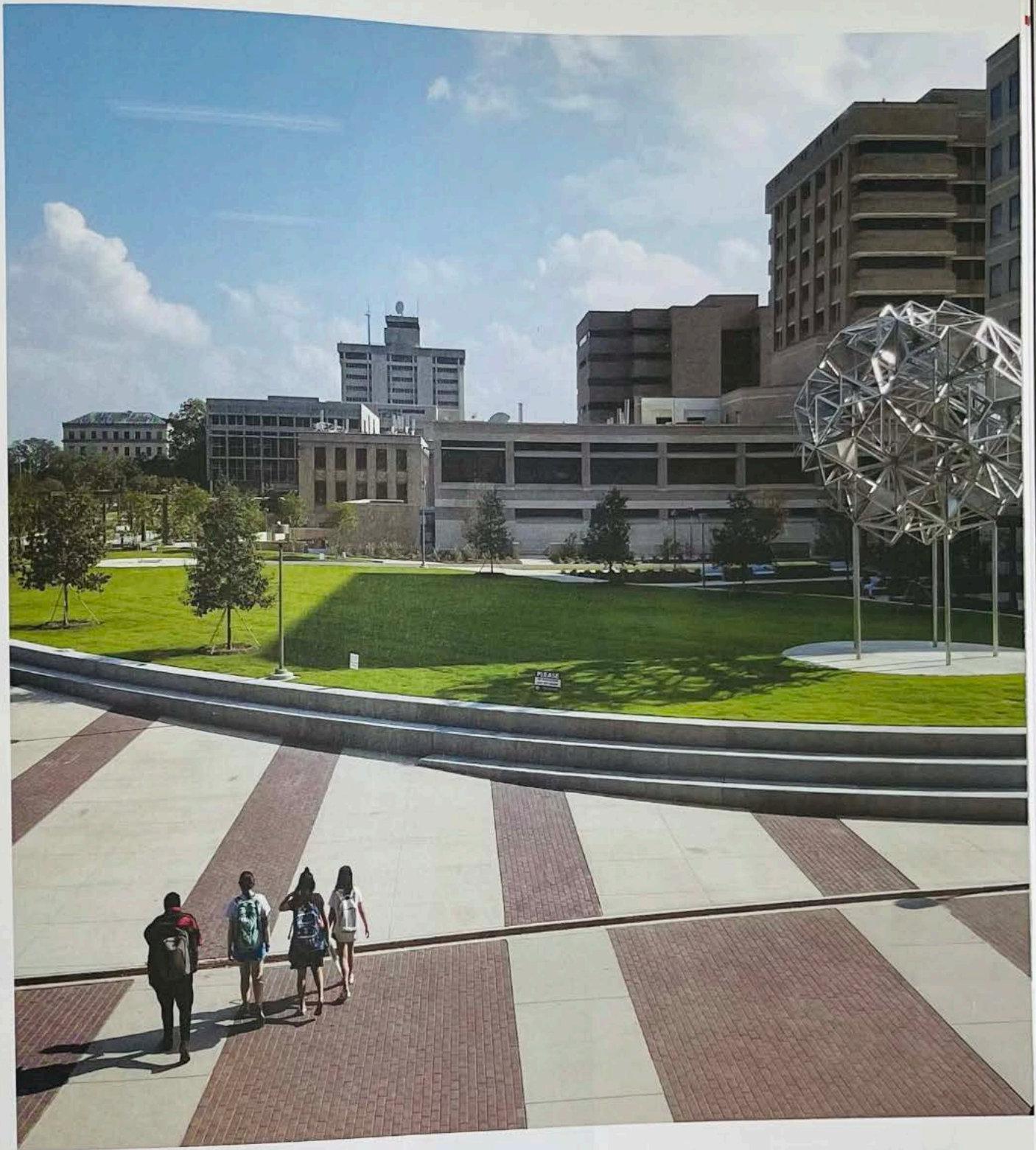
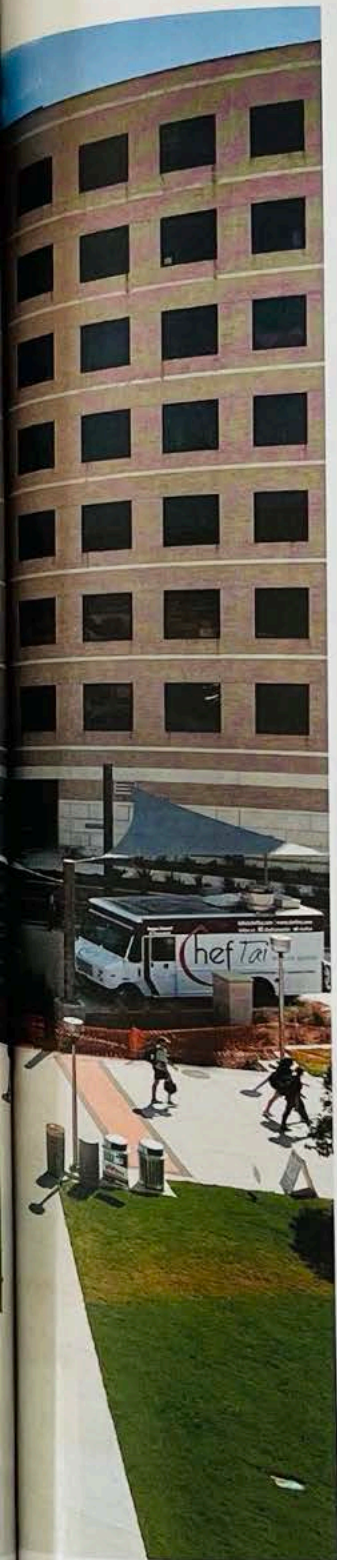


Above: At Texas A&M University the Landscape Architects with Coleman & Associates helped create a master plan focused on the reimagining of the outdoor spaces of the Engineering Quad (E-Quad) that surround the Zachry Engineering Building. They converted the area from a brownfield site of concrete into this new 3-acre campus green.

The reimagined Zachry Engineering Building and adjacent E-Quad (Engineering Quad) is a new vibrant hub on the Texas A&M University (TAMU) campus. The Landscape Architects with Coleman & Associates converted a brownfield site of concrete, outdated structures and back-of-house structure uses into this new 3.25-acre campus green serving as a dynamic hub, facilitating opportunities for students to congregate, recreate, collaborate, study, dine and relax. This distinct green space demonstrates the social and ecological benefits of sustainable landscape design. Unique details, from the design of custom lounging plinths to the inclusion of favorite mathematic formulas into the paving, exemplify the philosophy of

putting engineering on display. As the largest academic building on the Texas A&M campus, the Zachry Engineering Complex and E-Quad has set a new bar for experiential learning and formation of campus community in outdoor space.

The Landscape Architect was involved from initial master planning and programming through construction completion. Project design focused on the reimagining of the outdoor spaces that surround the 40-year-old Zachry building and the transformation of the adjacent brownfield site into a needed vibrant hub for this part of the Texas A&M campus. They also included generating studies and detailed coordination and



collaboration with the art consultant and sculptor. Outreach contributions included participation as a guest lecturer in the TAMU College of Architecture and facilitation of a Zachry/E-Quad design charrette with the university's landscape architecture students, including hard-hat site visits to witness the process first-hand.

The direction of the project was to create a new campus green (the E-Quad) and to fully integrate the Zachry Engineering Complex in an outdoor experience with the purpose of facilitating exciting new ways for students to study, experiment, recreate, collaborate and relax. To achieve these goals, the Landscape Architect worked

collaboratively with the client and the architects to ensure that the interior space and indoor programs were supported by, and in many cases extend into, the contiguous outdoor edges and spaces of the landscape. For example, the maker-space and fabrication lab is expanded and enhanced by a comfortable, flexible and casual outdoor space that enables the learning experience to take place outside and be on display for the campus community to appreciate.

The Landscape Architect envisioned a design philosophy of a new landscape for this once utilitarian part of campus and to actualize the dean of engineering's directive to create a unique and

Above: The ellipse lawn area was inspired by the shape of the space framed by the existing buildings and the need to elegantly connect each building with wide sidewalks that served the dual purpose of pedestrian movement and fire lanes. The curvature around the lawn also created interesting nodes between the sidewalk and the buildings which were perfectly scaled for outdoor gathering spaces overlooking the lawn and sculpture.